

MAINTENANCE & MATERIALS



Embrace and Rediscover
your **Elegant Outdoor**
Furniture

MAINTENANCE

Weave Maintenance



We recommend that Woven Furniture is cleaned at least once a year, it is important to use a non-foaming cleaner on woven furniture, as a foaming product will leave residues in the gaps in between the weave which will then attract dirt.

A pressure Hose on a wide spray setting is acceptable to use on woven chairs at a distance of approximately one metre from the product, tables should be cleaned carefully with sponge and a cleaning agent. follow the instructions below;

1. Apply lukewarm water with a soft cloth or sponge.
2. brush the furniture clean with a soft scrubbing pad.
3. Rinse Furniture well with clean water.

Scratch Marks or abrasion to the edges of the fibre can be repaired by very briefly and carefully applying heat (i.e. the heat of a hair dryer) to the affected area and rubbing along the length of the fibre with a pie



To clean the Table top glass was suggest the use of any household glass or window cleaner.

Cushion Cleaning Tips

1. Brush off any loose dirt
2. Prepare a cleaning a solution of 1:16 mild detergent to lukewarm water.
3. Use a sponge or a soft bristle brush to clean.
4. Allow cleaning solutions to soak into the fabric.
5. Rinse thoroughly to remove all soap residue.
6. Allow fabric to air dry.

Do not dry clean the cushions, use bleach or detergent, iron, steam Iron or tumble dry.



MATERIALS

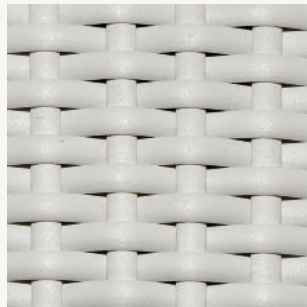


We choose from only The highest quality materials ensuring our products stay at their best through years of use.

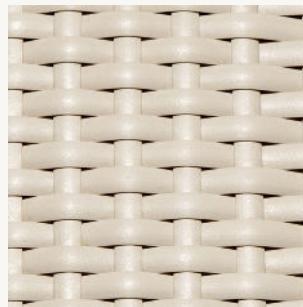
Polypeel



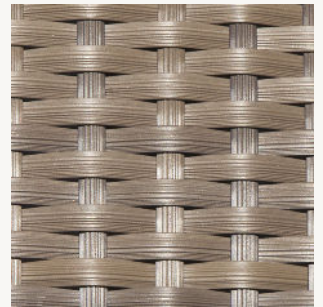
7mm Antique
Honey



7mm Solid
White



7mm White
washed



7mm Moccacino



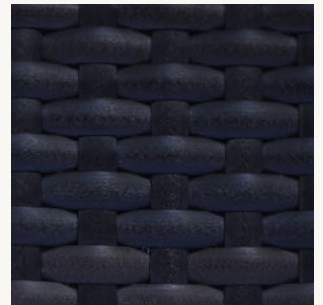
7mm Pearl



7mm Prussian Dark
Bronze



7mm Dark Gray



7mm Dark Brown



7mm Chocolate
Brown



7mm Black Leather
Effect

MATERIALS

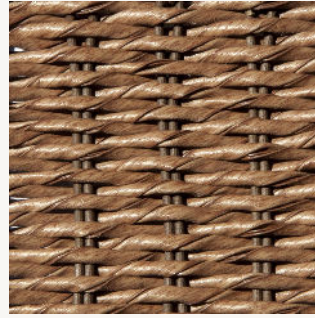
Polystrap



4.8 mm Slate gray
Twisted



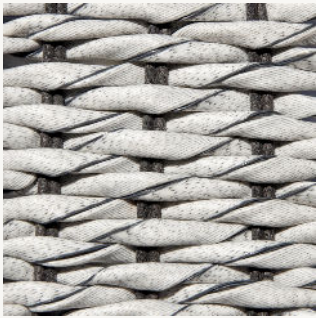
6 mm mm Brown
Oak Twisted



4.8 mm Tropical
Twisted



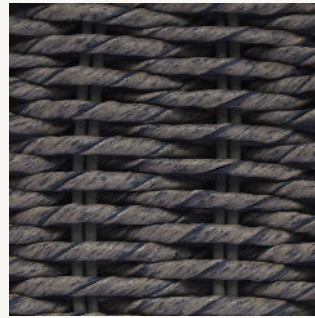
6 mm Nigerian
Satin Wood
Twisted



6 mm Offwhite
Twisted



7 mm Cordial Gray



4.8 mm kubu
Twisted

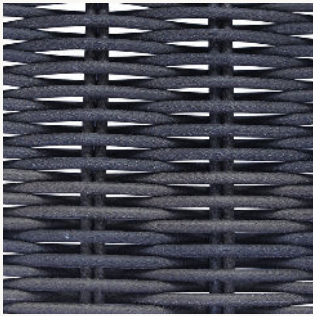


10 mm Flash
Espresso

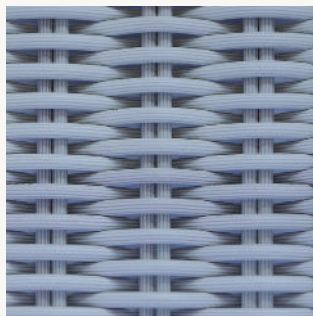


7 mm Mocha
Cream

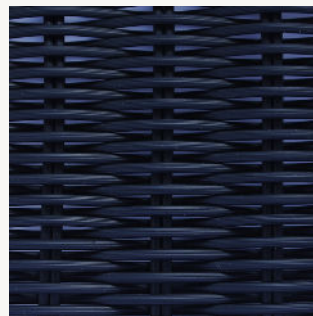
Polyrod



3mm Deep
Amazon



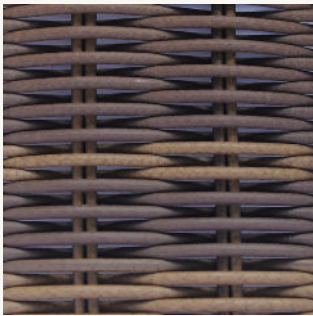
3mm Classic
White



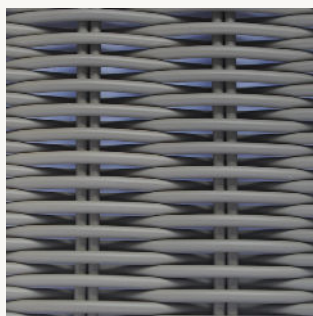
3mm black



3mm Golden Black



3mm Red Pine



3mm Kubu

Rope



Cordial Light gray
53 mm



Cordial dark gray
15.5 mm

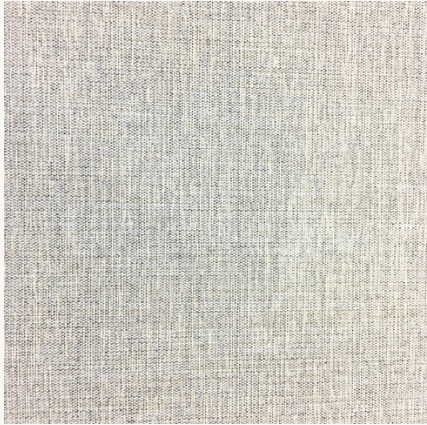


Cordial dark gray 53
mm



Cordial Beige
15.5mm

FABRICS



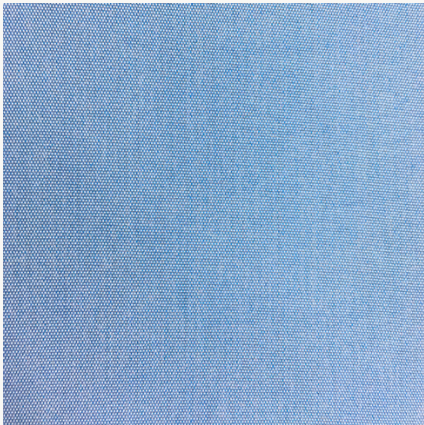
Pearl



Oatmeal



Taupe



Classic Blue



Charcoal

Powdercoat



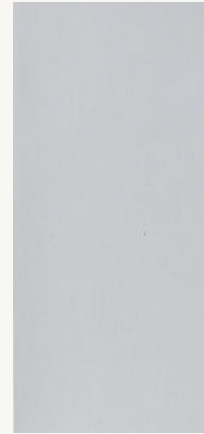
Solid White
(Glossy)



Silky White
(Textured)



Pearl
(Glossy)



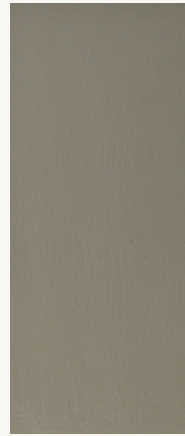
Classic White
(Glossy)



Peach
(Matte)



Redpine
(Textured)



Kubu
(Glossy)



Cordial Beige
(Textured)



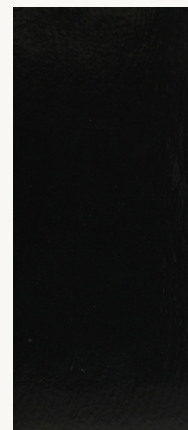
MC Gray
(Glossy)



Slate Gray
(Textured)



Cordial Gray
(Textured)



Black
(Glossy)